

MIAN GEE TIRE

OMAN LONGRUN TIRE

MIAN GEE TIRE OMAN

Our name is quality.

TRUCK AND BUS TIRES CATALOG

✉ miansha456@gmail.com



TRUCK AND BUS TIRES CATALOG

INTRODUCTION

MIAN GEE TIRE Long run tire

MIAN GEE GROUP is a professional tire trading company with advanced tire products and management team to provide customers with high-quality products, services and solutions. The sales network covers whole nation of Oman and GCC.

The company regards quality as the foundation of the company's survival. It has established a high-quality product lines in a full range of tires. The company's products have passed ISO/IATF16949S international acid system certification and GCC certification in the Middle East.

MIAN GEE GROUP Tire focuses on customer and market, starting with business and quality drive, quickly achieve informatization and technology updates, and comprehensively improving corporate operations decision-making capabilities.

MIAN GEE GROUP Tire will uphold the core value of "going together, winning together" and aiming at users and market needs to manufacture high-quality tires with less consumption and longer mileage to achieve a more efficient and sustainable future. MIAN GEE Tire is willing to continue to build a symbiosis, co-creation, and co-creation ecosystem with partners, clients, suppliers, industrial organizations, standards organizations to jointly promote progress and long-term development of the tire industry.



CERTIFICATES

R117



Measurement management system



ISO



CCC



DOT



ECE



GSO



INMETRO





MIAN GEE TIRE

Our name is quality.



CONTENTS

UF195	➤ 01	UD198	➤ 14
UF185	➤ 02	UD131	➤ 15
UF501	➤ 03	UD186	➤ 16
UF101	➤ 04	UD188	➤ 17
UA922	➤ 05	UD223	➤ 18
UA130	➤ 06	UD233	➤ 19
UA180	➤ 07	UD756	➤ 20
UA221	➤ 08	UD266	➤ 21
UA190	➤ 09	UD721	➤ 22
UT192	➤ 10	UW733	➤ 23
UT193	➤ 11	UD311	➤ 24
UT129	➤ 12	UD312	➤ 25
UD197	➤ 13	UD361	➤ 26

UF195

Steer & trailer



Suitable Road Conditions: Good paved road & highway
 Suitable wheel Position:
 Steer & trailer of Long haul on truck and all position for bus

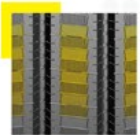
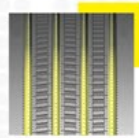
UF185

Steer & trailer

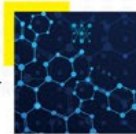
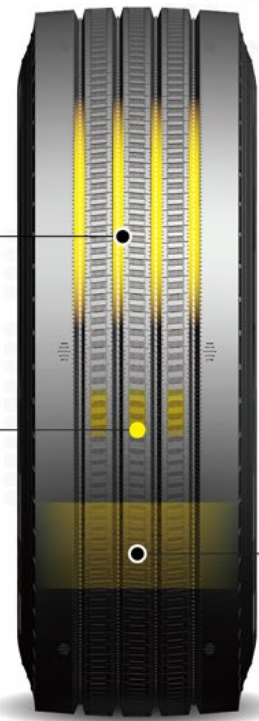


Suitable Road Condition: Good paved road & highway
 Suitable Wheel Position: Steer & trailer position for long haul truck

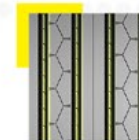
Pattern:
 Four straight grooves design and widen running surface provide better performance and excellent stability



Special stone rejection design helps in heat dissipation when consistent running; unique diamond pattern design helps to prevent irregular abrasion and provides noise reduction efficiently



New formula of tread rubber provides better scrub resistance and excellent handling. Low rolling resistance reduces fuel consumption and longer mileage.



Pattern: Four main grooves and innovative tread design provide low noise emission and excellent head dissipation in constant running.



Excellent loading performance: Bekaert steel cord material ensures the driving more stable and leads to longer life.



High durability: CABOT material plus super wear resistant formula greatly improve the wear resistance, extending running mileage for more than 30%.

Strong high speed performance: Wide running tread. Adopted special vertical design both on shoulder and tread side ensure safety and stability under high speed.

Origin CN VN	SIZE	PR	LI/SS	Standard Rim	Max. Load				Pressure				Tread Depth (mm)	Overall Diameter (mm)	Section Width (mm)
					(kgs)		(lbs)		(kPa)		(PSI)				
					S	D	S	D	S	D	S	D			
•	9.5R17.5	18	143/142 J	6.75	2725	2575	6005	5675	875	875	125	125	13.5	842	240
•	10.00R20	18	149/146 K	7.50	3250	3000	7165	6610	930	930	135	135	16.5	1054	278
• •	11R22.5	16	146/143 L	8.25	3000	2725	6610	6005	830	830	120	120	16.5	1054	279
•	11R22.5	18	149/146 L	8.25	3250	3000	7165	6610	930	930	135	135	16.5	1054	279
• •	11R24.5	16	149/146 L	8.25	3250	3000	7160	6610	830	830	120	120	16.5	1110	279
•	12R22.5	18	152/149 L	9.00	3550	3250	7830	7160	930	930	135	135	17.0	1085	300
•	205/75R17.5	14	124/122 M	6.00	1600	1500	3525	3310	750	750	110	110	13.0	753	204
•	215/75R17.5	16	135/133 L	6.00	2180	2060	4805	4540	860	860	125	125	12.5	767	211
•	235/75R17.5	18	143/141 L	6.75	2725	2575	6005	5675	860	860	125	125	13.0	797	233
•	245/70R17.5	18	143/141 J	7.50	2725	2575	6005	5675	875	875	125	125	13.0	789	248
•	245/70R19.5	18	144/142 K	7.50	2800	2650	6175	5840	900	900	130	130	13.0	839	248
•	265/70R19.5	18	143/141 K	7.50	2725	2575	6005	5675	900	900	130	130	13.5	867	262
• •	275/80R22.5	18	149/146 L	8.25	3250	3000	7160	6610	900	900	130	130	16.0	1012	276
•	285/70R19.5	18	150/148 K	8.25	3350	3150	7390	6945	900	900	130	130	13.0	895	283
• •	295/75R22.5	16	146/143 L	9.00	3000	2725	6610	6005	830	830	120	120	16.5	1014	298
• •	295/80R22.5	18	154/149 M	9.00	3750	3250	8270	7160	850	850	125	125	15.5	1044	298
•	315/70R22.5	18	156/150 L	9.00	4000	3350	8820	7385	900	900	130	130	15.5	1014	312
• •	315/80R22.5	20	156/153 L	9.00	4000	3650	8820	8050	850	850	125	125	16.5	1076	312

Origin CN VN	SIZE	PR	LI/SS	Standard Rim	Max. Load				Pressure				Tread Depth (mm)	Overall Diameter (mm)	Section Width (mm)
					(kgs)		(lbs)		(kPa)		(PSI)				
					S	D	S	D	S	D	S	D			
•	12R22.5	18	152/149 L	9.00	3550	3250	7830	7160	930	930	135	135	17.0	1085	300
•	11.00R20	18	152/149 K	8.00	3550	3250	7830	7170	930	930	135	135	17.0	1096	293



UF501
Steer & trailer



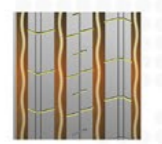
Suitable Road Conditions: Good paved road & highway
Suitable wheel Position: Steer & trailer of Long haul on truck and all position for bus



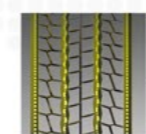
UF101
Steer & trailer



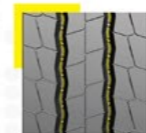
Suitable Road Conditions: Good paved road & highway
Suitable wheel Position: steer & trailer position for light truck



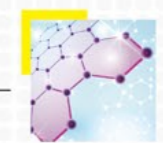
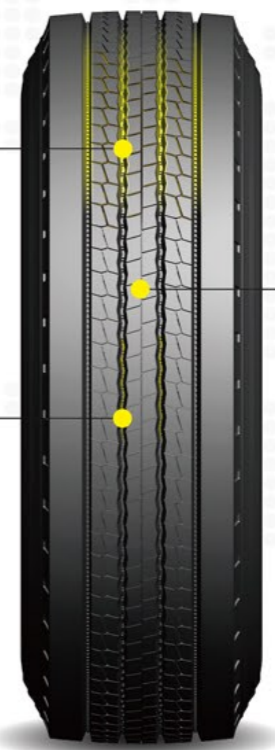
Excellent wear resistance
Excellent Handling
Fuel Saving



Pattern:
4-rib main grooves and 3-row precise tread design provide better performance especially for light trucks.



The stone ejector design effectively prevents stones from lodging in the tread and irregular wear.



Optimized structure enhances fuel-saving ability, economical fuel. Fuel-saving pattern design provides low rolling resistance.

Origin CN VN	SIZE	PR	LI/SS	Standard Rim	Max. Load				Pressure				Tread Depth (mm)	Overall Diameter (mm)	Section Width (mm)
					(kgs)		(lbs)		(kPa)		(PSI)				
					S	D	S	D	S	D	S	D			
• •	275/70R22.5	18	148/145 M	8.25	3150	2900	6945	6395	900	900	130	130	15.0	958	276

Origin CN VN	SIZE	PR	LI/SS	Standard Rim	Max. Load				Pressure				Tread Depth (mm)	Overall Diameter (mm)	Section Width (mm)
					(kgs)		(lbs)		(kPa)		(PSI)				
					S	D	S	D	S	D	S	D			
•	6.50R16LT	12	110/105 L	5.50F	1060	925	2340	2040	670	670	97	97	10.5	750	185
•	7.00R16LT	14	118/114 L	5.50F	1320	1180	2910	2600	770	770	110	110	11.5	775	205
•	7.50R16LT	14	122/118 L	6.00G	1500	1320	3310	2910	770	770	110	110	13.0	815	215
•	8.25R16LT	18	132/128 K	6.50H	2000	1800	4410	3970	870	870	126	126	13.5	865	235



UA922
All Position-Mixed Service



Suitable Road Conditions: General paved road
Suitable wheel Position: All-position for mid-haul truck

UA130
All-position



Suitable Road Condition: Good paved road & highway
Suitable wheel Position: All-position of long-haul truck and bus



- Excellent durability
- High strength
- Cut and chip resistant compound



The optimized pattern design improves both dry and wet handling in changing regional traffic conditions.



The high, rigid belt structure enhances driving stability.

The enhanced tread formula ensures long tread life and excellent cut or chip resistance.

Origin CN VN	SIZE	PR	LI/SS	Standard Rim	Max. Load				Pressure				Tread Depth (mm)	Overall Diameter (mm)	Section Width (mm)
					(kgs)		(lbs)		(kPa)		(PSI)				
					S	D	S	D	S	D	S	D			
•	10.00R20	18	149/146 K	7.50	3250	3000	7165	6610	930	930	135	135	16.00	1054	278
•	11.00R20	18	152/149 K	8.00	3550	3250	7830	7170	930	930	135	135	15.5	1096	293
•	12.00R20	22	158/155 K	8.50	4250	3875	9370	8540	970	970	140	140	15.5	1136	315
•	13R22.5	20	156/150 J	9.75	4000	3350	8820	7385	900	900	130	130	17.5	1124	320
•	315/80R22.5	20	156/153 L	9.00	4000	3650	8820	8050	850	850	125	125	16.5	1076	312
• •	11R22.5	16	146/143 L	8.25	3000	2725	6610	6005	830	830	120	120	16.0	1054	279
• •	11R24.5	16	149/146 L	8.25	3250	3000	7160	6610	830	830	120	120	16.5	1110	279

Origin CN VN	SIZE	PR	LI/SS	Standard Rim	Max. Load				Pressure				Tread Depth (mm)	Overall Diameter (mm)	Section Width (mm)
					(kgs)		(lbs)		(kPa)		(PSI)				
					S	D	S	D	S	D	S	D			
•	215/75R17.5	16	135/133 L	6.00	2180	2060	4805	4540	860	860	125	125	12.5	767	211
•	225/70R19.5	14	128/126 L	6.75	1800	1700	3970	3750	760	760	110	110	12.5	817	226
•	235/75R17.5	18	143/141 L	6.75	2725	2575	6005	5675	860	860	125	125	13.0	797	233
•	245/70R19.5	18	144/142 J	7.50	2800	2650	6175	5840	900	900	130	130	13.0	839	248
•	265/70R19.5	18	143/141 J	7.50	2725	2575	6005	5675	900	900	130	130	13.5	867	262
•	285/70R19.5	18	150/148 K	8.25	3350	3150	7390	6945	900	900	130	130	14.0	895	283

UA180

All-position



Suitable Road Conditions: General paved road
 Suitable wheel Position: All-position for mid-haul truck

UA221

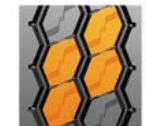
Steer&Trailer



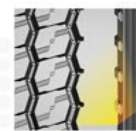
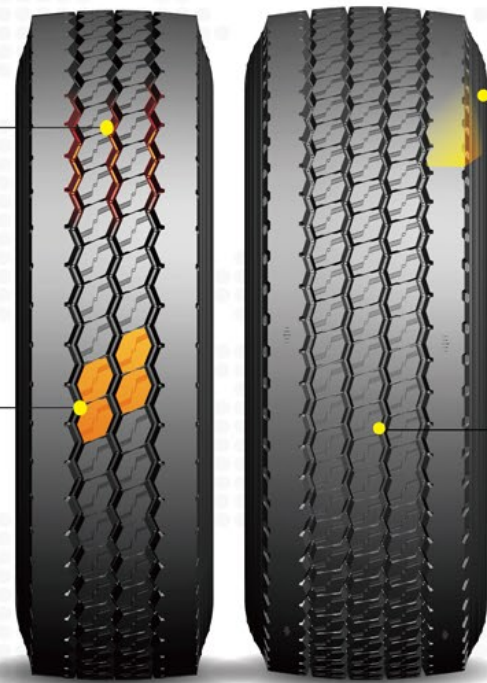
Suitable Road Conditions: General paved road
 Suitable wheel Position: All-position for mid-haul truck



Pattern:
 Popular three-line pattern with dot-line protrusions at the bottom of the three main grooves effectively prevent stone rejection;



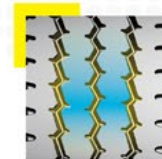
Better noise reduction thanks to two-row hexagonal blocks with innovative variable pitches linked into "S" shape.



Anti -irregular wear:
 The vertical shoulder design with the smooth edge on the tread ensures better safety and stability under high speed.



Reinforced carcass:
 Excellent loading capacity thanks to enhanced design of tire carcass.



- Cool running
- High wear-resistance
- Long tread life



Origin CN VN	SIZE	PR	LI/SS	Standard Rim	Max. Load				Pressure				Tread Depth (mm)	Overall Diameter (mm)	Section Width (mm)
					(kgs)		(lbs)		(kPa)		(PSI)				
					S	D	S	D	S	D	S	D			
•	12R22.5★	18	152/149 K	9.00	3550	3250	7830	7160	930	930	135	135	16.5	1085	300
•	13R22.5★	20	156/150 K	9.75	4000	3350	8820	7385	900	900	130	130	17.5	1124	320
•	7.00R16L★	14	118/114 L	5.50F	1320	1180	2910	2600	770	770	110	110	12.0	775	205
•	7.50R16L★	14	122/118 L	6.00G	1500	1320	3310	2910	770	770	110	110	14.0	815	215
•	8.25R16L★	18	132/128 L	6.50H	2000	1800	4410	3970	870	870	126	126	13.5	865	235
•	235/75R17★	18	143/141 L	6.75	2725	2575	6005	5675	860	860	125	125	13.0	797	233
•	• 315/80R22★	20	156/153 K	9.00	4000	3650	8820	8050	850	850	125	125	17.0	1076	312
•	• 385/65R22★	20	160 K	11.75	4500	900	1072	389	17.5	1072	389	17.5	1072	389	
•	• 385/65R22★	24	164 K	11.75	5000	900	1072	389	17.5	1072	389	17.5	1072	389	
•	• 325/95R2★	22	162/160 K	9.00	4750	4500	10500	9920	850	850	125	125	16.0	1228	325

Origin CN VN	SIZE	PR	LI/SS	Standard Rim	Max. Load				Pressure				Tread Depth (mm)	Overall Diameter (mm)	Section Width (mm)
					(kgs)		(lbs)		(kPa)		(PSI)				
					S	D	S	D	S	D	S	D			
•	9.00R20	16	144/142 K	5.50F	2800	2650	6170	5840	900	900	130	130	15.5	1030	259
•	10.00R20	18	149/146 K	7.50	3250	3000	7165	6610	930	930	135	135	16.0	1054	278
•	※ 10.00R20	18	149/146 K	7.50	3250	3000	7165	6610	930	930	135	135	16.0	1054	278
•	※ 11.00R20	18	152/149 K	8.00	3550	3250	7830	7170	930	930	135	135	16.5	1096	293
•	※ 12.00R20	20	156/153 K	8.50	4000	3650	8820	8050	900	900	130	130	17.0	1136	315
•	• 315/80R22.5	20	156/153 L	9.00	4000	3650	8820	8050	850	850	125	125	17.0	1076	312

※ UA221H

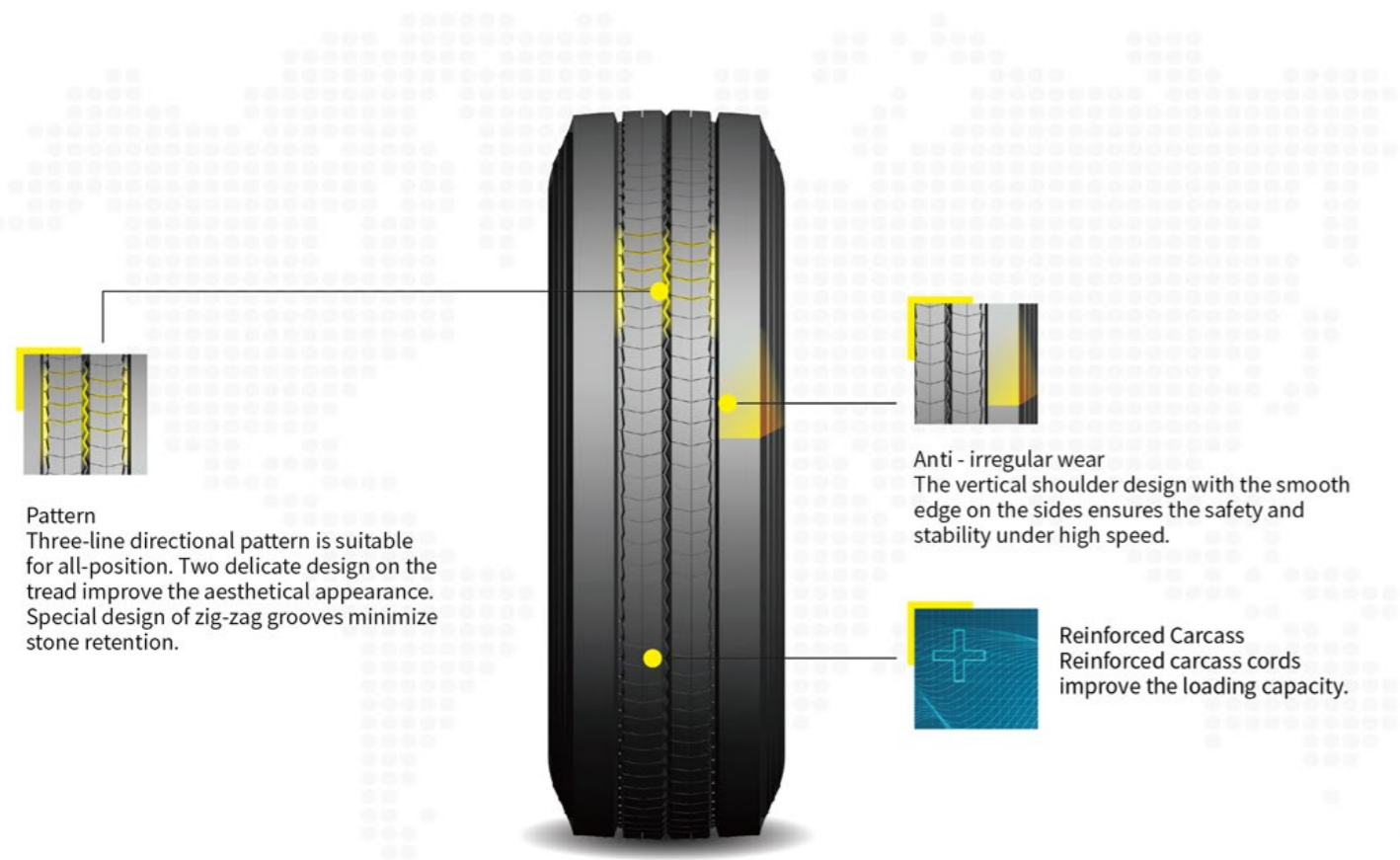



UA190
 All-position


 Suitable Road Condition: Good paved road & highway
 Suitable wheel Position: All-position of long-haul truck and bus


UT192
 Trailer


 Suitable Road Condition: Good paved road & highway
 Suitable Wheel Position: Trailer position of long-haul truck



Origin CN VN	SIZE	PR	LI/SS	Standard Rim	Max. Load				Pressure				Tread Depth (mm)	Overall Diameter (mm)	Section Width (mm)
					(kgs)		(lbs)		(kPa)		(PSI)				
					S	D	S	D	S	D	S	D			
• •	315/80R22.5	20	156/153 L	9.00	4000	3650	8820	8050	850	850	125	125	17.0	1076	312



Origin CN VN	SIZE	PR	LI/SS	Standard Rim	Max. Load				Pressure				Tread Depth (mm)	Overall Diameter (mm)	Section Width (mm)
					(kgs)		(lbs)		(kPa)		(PSI)				
					S	D	S	D	S	D	S	D			
•	11R22.5	16	146/143 M	8.25	3000	2725	6610	6005	830	830	120	120	9.0	1054	279
•	295/75R22.5	16	146/143 M	9.00	3000	2575	6610	6005	830	830	120	120	9.0	1014	298

UT193

Trailer



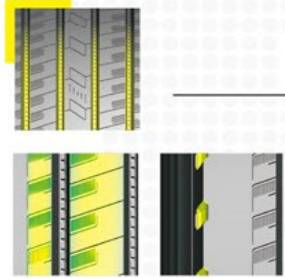
Suitable Road Condition: Good paved road & highway
 Suitable wheel Position: Trailer position of long-haul truck and bus

UT129

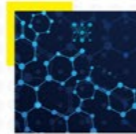
trailer



Suitable Road Condition: Good paved road & highway
 Suitable Wheel Position: Trailer position of long-haul truck



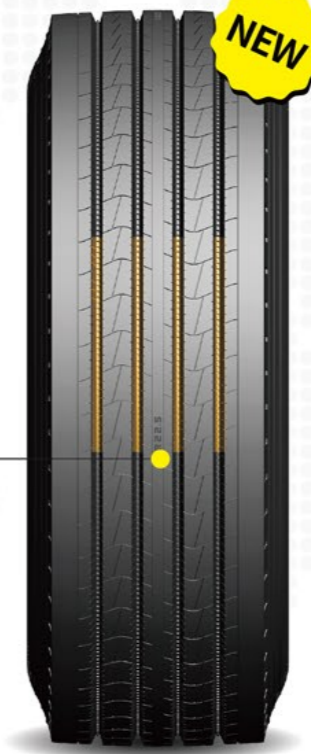
Pattern:
 Innovative 4-groove design helps stone rejection especially for trailer position. Dim and brighten tread design makes the tread pattern more aesthetic. The shoulder gap design maintains the heat dissipation.



Durable Compound
 Smaller groove design and bigger landing area guarantee the better durability and longer mileage.




Cost-efficient
 Premium quality with better competitive ability.



- Good driving stability
- Long tread life
- Good wear resistance

Origin CN VN	SIZE	PR	LI/SS	Standard Rim	Max. Load				Pressure				Tread Depth (mm)	Overall Diameter (mm)	Section Width (mm)
					(kgs)		(lbs)		(kPa)		(PSI)				
					S	D	S	D	S	D	S	D			
•	12R22.5	18	152/149 L	9.00	3550	3250	7830	7160	930	930	135	135	16.0	1085	300
•	385/55R22.5	20	160 K	12.25	4500	9920			900	130			14.5	996	386
• •	385/65R22.5	24	164 K	11.75	5000	11000			900	130			16.0	1072	389
•	385/65R22.5	20	160 K	11.75	4500	9920			900	130			16.0	1072	389

Origin CN VN	SIZE	PR	LI/SS	Standard Rim	Max. Load				Pressure				Tread Depth (mm)	Overall Diameter (mm)	Section Width (mm)
					(kgs)		(lbs)		(kPa)		(PSI)				
					S	D	S	D	S	D	S	D			
•	255/70R22.5	16	140/137 M	7.50	2500	2300	5510	5070	830	830	120	120	12.5	930	255
•	285/75R24.5	16	147/144 L	8.25	3075	2800	6780	6175	830	830	120	120	14.5	1050	283
•	315/80R22.5	20	156/153 K	9.00	4000	3650	8820	8050	850	850	125	125	16.5	1076	312



UD197

 Close shoulder drive



Suitable Road Conditions: General paved road
 Suitable wheel Position: Driving position for mid-haul truck



UD198

 Drive



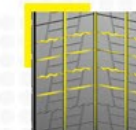
Suitable Road Conditions: Good paved road & highway
 Suitable wheel Position: drive position for Long haul on truck and bus



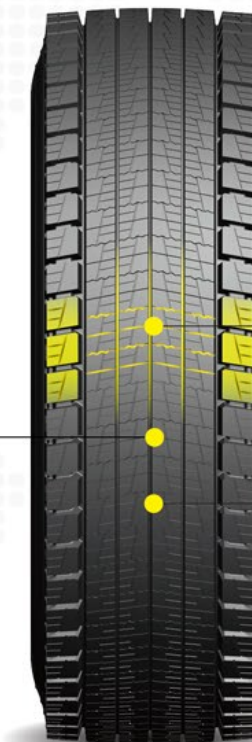
- Excellent grip
- Excellent durability
- Excellent traction
- Excellent cost performance



Unique block pattern design helps on better running stability and avoid uneven abrasion. Both driving and trailer position are adoptable with mixed service ability. After using for a period, it can be changed to trailer position to extend service life.



Pattern:
 Three straight deep grooves with two shallow grooves, matching small blocks design and sips on the tread provides better driving performance and excellent handling ability.



Durable and fuel consumption
 New durable formula and unique block design provide better scrub resistance and excellent handling. Low rolling resistance reduces fuel consumption and longer mileage.

Origin CN VN	SIZE	PR	LI/SS	Standard Rim	Max. Load				Pressure				Tread Depth (mm)	Overall Diameter (mm)	Section Width (mm)
					(kgs)		(lbs)		(kPa)		(PSI)				
					S	D	S	D	S	D	S	D			
•	11R22.5	16	146/143 L	8.25	3000	2725	6610	6005	830	830	120	120	23.5	1059	279
•	11R24.5	16	149/146 L	8.25	3250	3000	7160	6610	830	830	120	120	23.0	1110	279
•	295/75R22.5	16	146/143 L	9.00	3000	2575	6610	6005	830	830	120	120	23.5	1014	298

Origin CN VN	SIZE	PR	LI/SS	Standard Rim	Max. Load				Pressure				Tread Depth (mm)	Overall Diameter (mm)	Section Width (mm)
					(kgs)		(lbs)		(kPa)		(PSI)				
					S	D	S	D	S	D	S	D			
•	12R22.5	18	152/149 L	9.00	3550	3250	7830	7160	930	930	135	135	20.0	1085	300
•	315/80R22.5	20	156/153 L	9.00	4000	3650	8820	8050	850	850	125	125	18.0	1076	312




UD131
 Close shoulder drive



Suitable Road Conditions: General paved road
 Suitable wheel Position: Driving position for mid-haul truck


UD186
 Drive



Suitable Road Conditions: General paved road
 Suitable wheel Position: Driving position for mid-haul truck



- Excellent grip
- Excellent durability



- Deep tread design to stronger driving force and precise Manipulation ability.
- Particularly reinforced shoulder design prevents chip off during cross vehicle steering.
- Unique tread formula linked by S-shaped design and special deep sip leads to longer life.

Origin CN VN	SIZE	PR	LI/SS	Standard Rim	Max. Load				Pressure				Tread Depth (mm)	Overall Diameter (mm)	Section Width (mm)
					(kgs)		(lbs)		(kPa)		(PSI)				
					S	D	S	D	S	D	S	D			
•	285/75R24.5	16	147/144 L	8.25	3075	2800	6780	6175	830	830	120	120	24.0	1050	283

Origin CN VN	SIZE	PR	LI/SS	Standard Rim	Max. Load				Pressure				Tread Depth (mm)	Overall Diameter (mm)	Section Width (mm)
					(kgs)		(lbs)		(kPa)		(PSI)				
					S	D	S	D	S	D	S	D			
•	295/80R22.5	18	152/149 L	9.00	3550	3250	7825	7165	900	900	130	130	21.5	1044	298
•	315/80R22.5	20	156/153 K	9.00	4000	3650	8820	8050	850	850	125	125	19.5	1076	312





UD188

 Drive



Suitable Road Conditions: General paved road
 Suitable wheel Position: Driving position for mid-haul truck



UD223

 Drive



Suitable Road Conditions: General paved road & on/off road
 Suitable wheel Position: drive position for dump truck, cement-mixing truck, short-haul truck etc.

Pattern : Deep tread design to reinforce the driving performance and precise manipulation .

Tread blocks on the shoulder with stiffeners prevent damages efficiently.

High durable Unique tread formula linked by S-shaped design and special deep sip lead to longer life.

Pattern: Original hierarchical blocks and aesthetical tread design inter-connected by stiffeners. Heat-dissipated design and stone ejector prolong the service of tire life.

Reinforced carcass by using high quality cord steel provides excellent loading capacity.

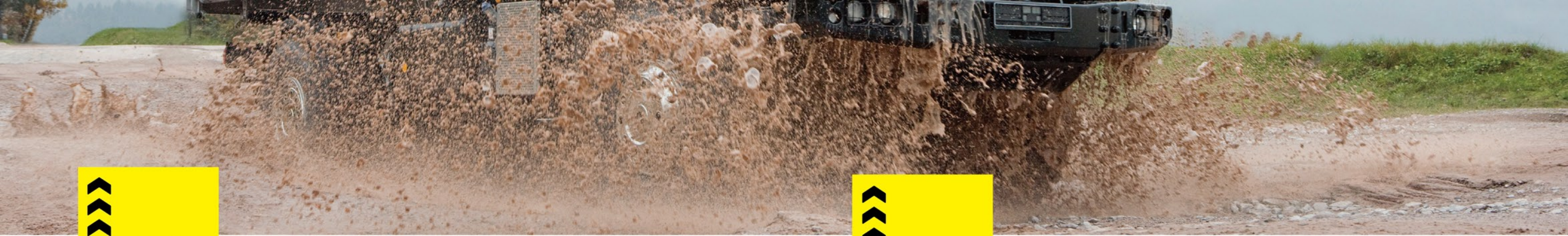
Enhanced tire bead provides excellent carrying capacity.

Origin CN VN	SIZE	PR	LI/SS	Standard Rim	Max. Load				Pressure				Tread Depth (mm)	Overall Diameter (mm)	Section Width (mm)
					(kgs)		(lbs)		(kPa)		(PSI)				
					S	D	S	D	S	D	S	D			
•	11R24.5	16	149/146 L	8.25	3250	3000	7160	6610	830	830	120	120	21.5	1110	279
•	12R22.5	18	152/149 L	9.00	3550	3250	7830	7160	930	930	135	135	22.0	1085	300
•	205/75R17.5	14	124/122 L	6.00	1600	1500	3525	3310	750	750	110	110	15.0	753	204
•	215/75R17.5	16	135/133 L	6.00	2180	2060	4805	4540	860	860	125	125	15.0	767	211
•	235/75R17.5	18	143/141 L	6.75	2725	2575	6005	5675	860	860	125	125	15.0	797	233
•	245/70R19.5	18	144/142 L	7.50	2800	2650	6175	5840	900	900	130	130	15.5	839	248
•	265/70R19.5	18	143/141 L	7.50	2725	2575	6005	5675	900	900	130	130	15.5	867	262
• •	315/80R22.5	20	156/153 L	9.00	4000	3650	8820	8050	850	850	125	125	22.5	1076	312
•	9.5R17.5	18	136/134 M	6.75	2725	2575	6005	5675	875	875	125	125	15.0	842	240
• •	11R22.5	16	146/143 L	8.25	3000	2725	6610	6005	830	830	120	120	21.5	1059	279
•	275/80R22.5	18	149/146 L	8.25	3250	3000	7160	6610	900	900	130	130	22.0	1012	276
• •	295/80R22.5	18	154/149 L	9.00	3750	3250	8270	7160	850	850	125	125	22.0	1044	298
• •	315/70R22.5	18	156/150 L	9.00	4000	3350	8820	7385	900	900	130	130	20.0	1014	312
• •	* 315/80R22.5	20	156/153 L	9.00	4000	3650	8820	8050	850	850	125	125	24.5	1076	312

* UD188 II

Origin CN VN	SIZE	PR	LI/SS	Standard Rim	Max. Load				Pressure				Tread Depth (mm)	Overall Diameter (mm)	Section Width (mm)
					(kgs)		(lbs)		(kPa)		(PSI)				
					S	D	S	D	S	D	S	D			
•	10.00R20	18	149/146 K	7.50	3250	3000	7165	6610	930	930	135	135	18.0	1065	278
•	11.00R20	18	152/149 K	8.00	3550	3250	7830	7170	930	930	135	135	18.5	1096	293
•	12.00R20	20	156/153 J	8.50	4000	3650	8820	8050	900	900	130	130	19.5	1136	315
•	12R22.5	18	152/149 K	9.00	3550	3250	7830	7160	930	930	135	135	20.0	1085	300
•	* 13R22.5	20	156/150 K	9.75	4000	3350	8820	7385	900	900	130	130	18.0	1136	320
•	315/80R22.5	20	156/153 K	9.00	4000	3650	8820	8050	850	850	125	125	21.5	1076	312
•	7.50R16LT	14	122/118 K	6.00G	1500	1320	3310	2910	770	770	110	110	15.5	815	215
•	8.25R16LT	18	132/128 K	6.50H	2000	1800	4410	3970	870	870	126	126	15.5	865	235
•	9.00R20	16	144/142 K	5.50F	2800	2650	6170	5840	900	900	130	130	17.0	1030	259
•	325/95R24	22	162/160 K	9.00	4750	4500	10500	9920	850	850	125	125	19.5	1228	325

* UD223H



UD233
Drive



Suitable Road Conditions: General paved road & on/off road
Suitable wheel Position: drive position for dump truck, cement-mixing truck, short-haul truck etc.

UD756
Drive



Suitable Road Conditions: Short mileage vehicles running on unpaved roads
Suitable wheel Position: Driving position for mid-haul truck



Reduce stone trapping
Prevent blocks falling
Heavy loading



- Cut resistance
- Excellent grip
- Avoid damage on tread



Origin CN VN	SIZE	PR	LI/SS	Standard Rim	Max. Load				Pressure				Tread Depth (mm)	Overall Diameter (mm)	Section Width (mm)
					(kgs)		(lbs)		(kPa)		(PSI)				
					S	D	S	D	S	D	S	D			
•	12.00R20	20	156/153 J	8.50	4000	3650	8820	8050	900	900	130	130	20.0	1136	315

Origin CN VN	SIZE	PR	LI/SS	Standard Rim	Max. Load				Pressure				Tread Depth (mm)	Overall Diameter (mm)	Section Width (mm)
					(kgs)		(lbs)		(kPa)		(PSI)				
					S	D	S	D	S	D	S	D			
•	295/80R22.5	18	152/149 J	9.00	3550	3250	7825	7165	900	900	130	130	24.0	1044	298



UD266
Drive

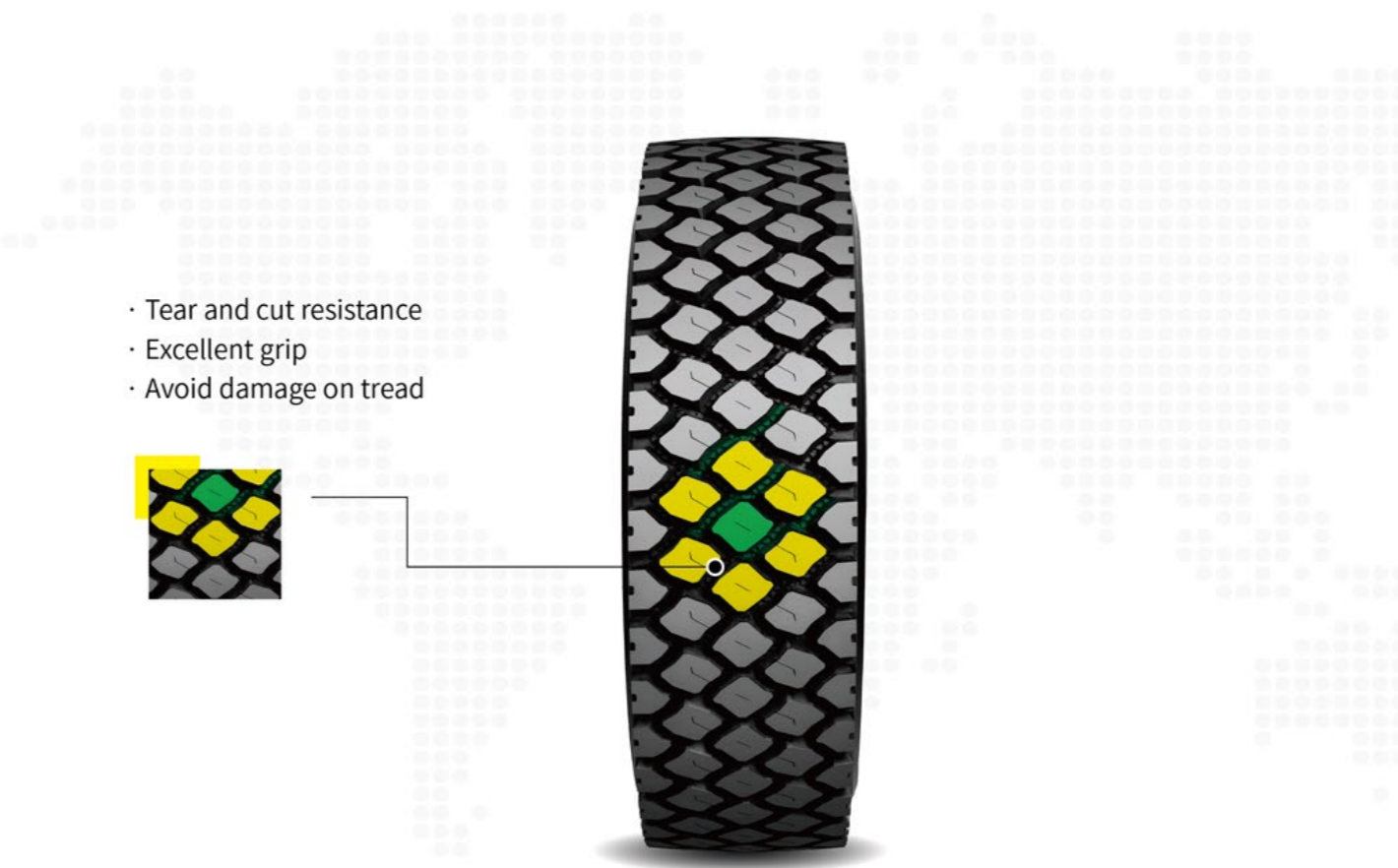
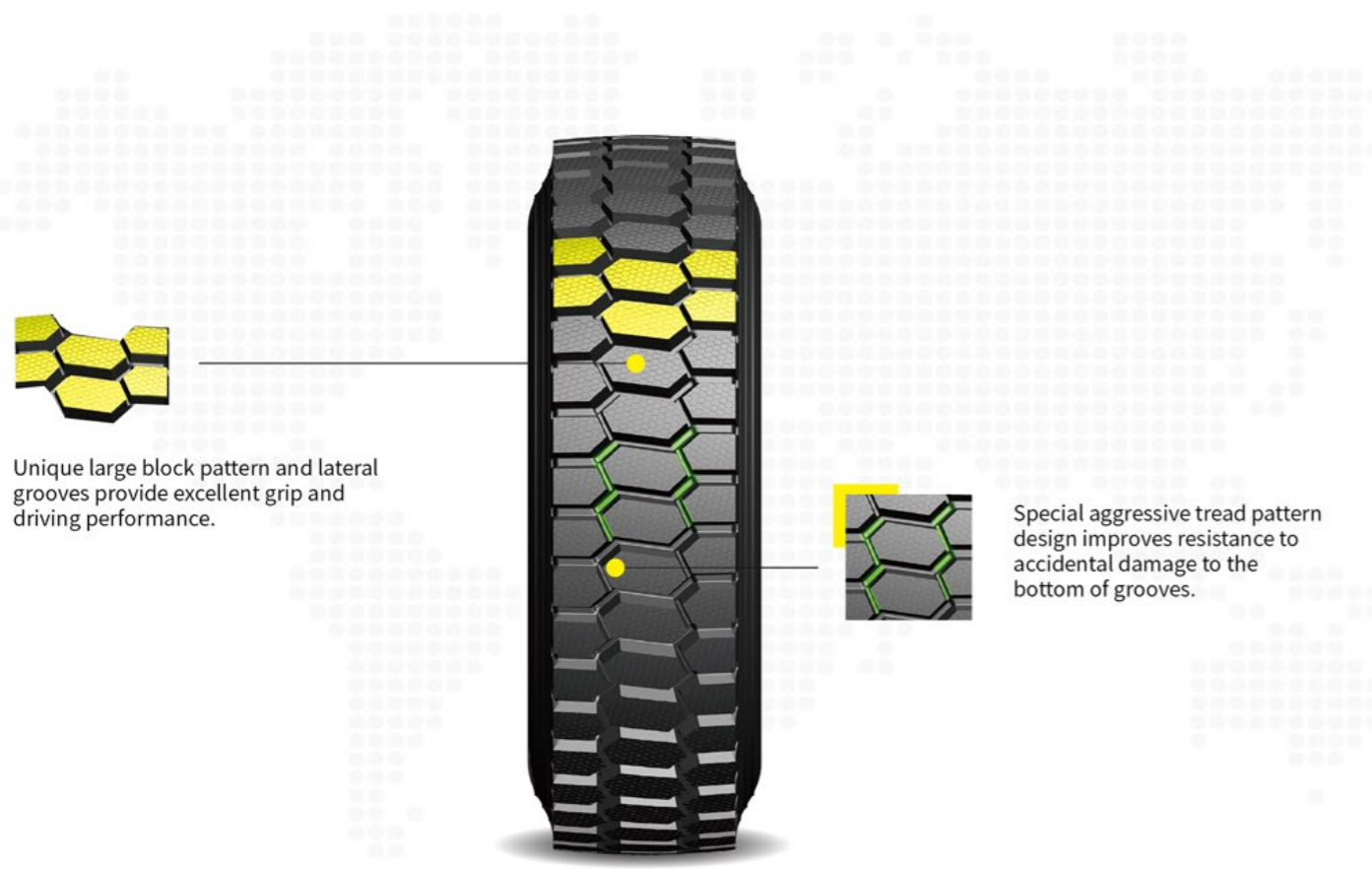


Suitable Road Conditions: Not paved and Mining road
Suitable wheel Position: All-position for Mining truck

UD721
All-position



Suitable Road Conditions: Unpaved road and mining road
Suitable Wheel Position: All position for mining truck



Origin CN VN	SIZE	PR	LI/SS	Standard Rim	Max. Load				Pressure				Tread Depth (mm)	Overall Diameter (mm)	Section Width (mm)
					(kgs)		(lbs)		(kPa)		(PSI)				
					S	D	S	D	S	D	S	D			
•	12.00R24	20	160/157 F	8.50	4500	4125	9920	9090	900	900	130	130	32.0	1238	315
•	325/95R24	22	162/160 F	8.50	4750	4500	10500	9920	850	850	125	125	31.0	1228	325

Origin CN VN	SIZE	PR	LI/SS	Standard Rim	Max. Load				Pressure				Tread Depth (mm)	Overall Diameter (mm)	Section Width (mm)
					(kgs)		(lbs)		(kPa)		(PSI)				
					S	D	S	D	S	D	S	D			
•	11R22.5	16	146/143 K	8.25	3000	2725	6610	6005	830	830	120	120	25.0	1059	279
•	11R24.5	16	149/146 K	8.25	3250	3000	7160	6610	830	830	120	120	24.5	1110	279




UW733
 All-position

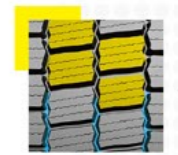


Suitable Road Condition: Good paved road & highway,
 especially snow covered roads
 Suitable wheel position: Driving position for mid-haul truck

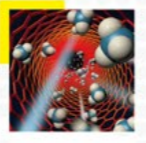

UD311
 All-position



Suitable Road Conditions: Not paved and Mining road
 Suitable wheel Position: All-position for Mining truck



Aggressive tread block provides good driving and stability.

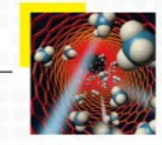


Good performance and wear resistance in low temperature.

Extended mileage and cross-season use.



Puncture resistance:
 Continuous bigger block and deeper tread, matrix grid design and puncture resistance formula provide excellent performance for mining at low speed.



Explosion-proof carcass:
 Explosion-proof carcass design, strengthened anti-wipe line on the side, resolving various impacts from the road.

Excellent loading capacity:
 Wider tread and reinforced cord steel improves loading capacity.

Origin CN VN	SIZE	PR	LI/SS	Standard Rim	Max. Load				Pressure				Tread Depth (mm)	Overall Diameter (mm)	Section Width (mm)
					(kgs)		(lbs)		(kPa)		(PSI)				
					S	D	S	D	S	D	S	D			
•	11R22.5	16	146/143 M	8.25	3000	2725	6610	6005	830	830	120	120	20.5	1054	279
•	11R24.5	16	149/146 L	8.25	3250	3000	7160	6610	830	830	120	120	20.5	1116	279

Origin CN VN	SIZE	PR	LI/SS	Standard Rim	Max. Load				Pressure				Tread Depth (mm)	Overall Diameter (mm)	Section Width (mm)
					(kgs)		(lbs)		(kPa)		(PSI)				
					S	D	S	D	S	D	S	D			
•	12.00R20	20	156/153 D	8.50	4000	3650	8820	8050	900	900	130	130	26.5	1136	315

UD312

Drive



Suitable Road Conditions: Unpaved road and mining road
Suitable Wheel Position: All position for mining truck

UD361

All-position



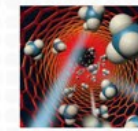
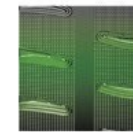
Suitable Road Conditions: Unpaved road and mining road
Suitable Wheel Position: All position for mining truck



- Excellent shock resistance & resistance against damage
- Extended life-span
- Improved driving comfort
- Low noise production & reduced vibration
- Extra deep grooves & wide tread depth

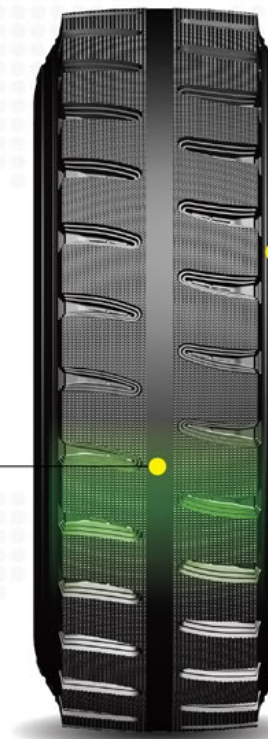


Run-flat patten design and great heat dissipation are suitable for short-distance outside the mine area .



Explosion-proof Carcass:
Explosion-proof carcass design strengthened anti-wipe line on the side, resolving various impacts from the road .

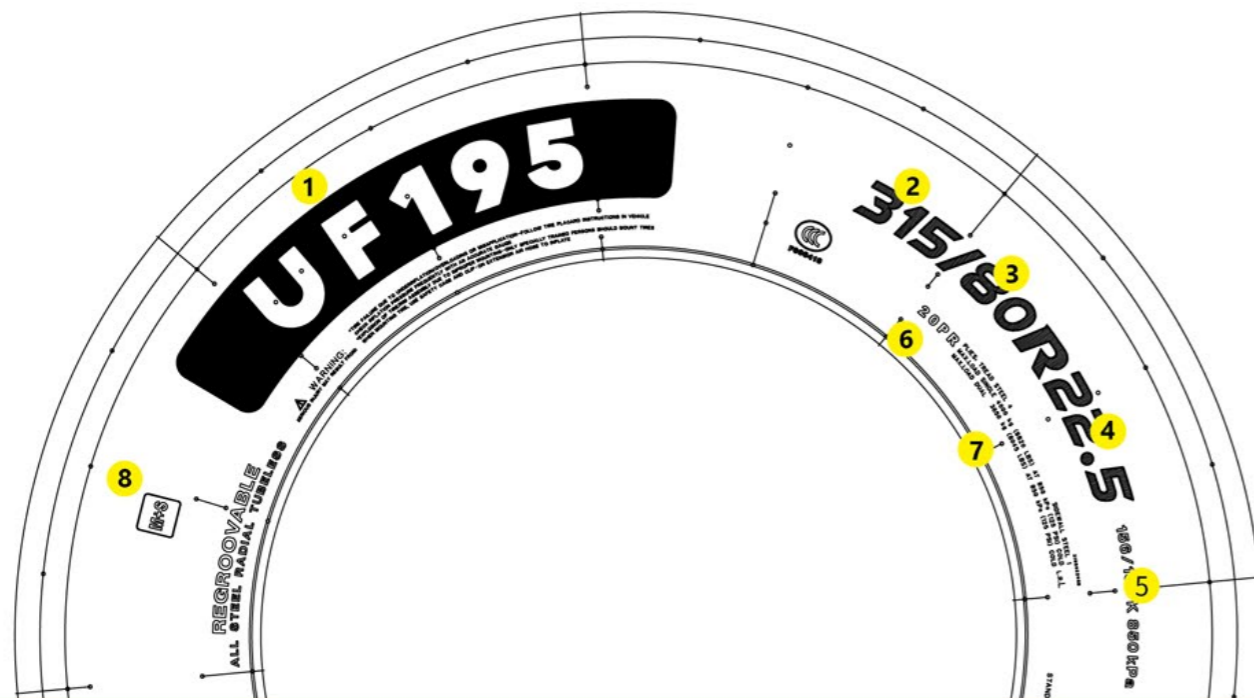
Excellent Loading Capacity:
Wider tread and reinforced cord steel improves loading capacity.



Origin CN VN	SIZE	PR	LI/SS	Standard Rim	Max. Load				Pressure				Tread Depth (mm)	Overall Diameter (mm)	Section Width (mm)
					(kgs)		(lbs)		(kPa)		(PSI)				
					S	D	S	D	S	D	S	D			
•	12.00R20	20	156/153 D	8.50	4000	3650	8820	8050	900	900	130	130	26.5	1136	315

Origin CN VN	SIZE	PR	LI/SS	Standard Rim	Max. Load				Pressure				Tread Depth (mm)	Overall Diameter (mm)	Section Width (mm)
					(kgs)		(lbs)		(kPa)		(PSI)				
					S	D	S	D	S	D	S	D			
•	12.00R20	20	156/153 G	8.50	4000	3650	8820	8050	900	900	130	130	24.0	1136	315

DESIGNATIONS, LOAD AND SPEED INDEX



- ❶ Pattern name
- ❷ Tire section width(mm)
- ❸ Aspect ratio
- ❹ Internal diameter in inches corresponding to the rim diameter
- ❺ 156:Load carrying capacity index for single tire
153:Load carrying capacity index for dual tire
K:Speed symbol
- ❻ Number of Ply Rating
Larger Ply Rating=Larger Load Capacity
- ❼ Tyre construction and load/pressure details
- ❽ M+S or M.S, or M&S symbols are used in case the tire is designated to deliver better performance in mud or melting snow conditions = better performance than normal usage tire

The coefficients in this table are those of the ETRTO standard and are given for information only.

Contact us for all load capacities greater than the basic load limits given by tire markings and used in this brochure.

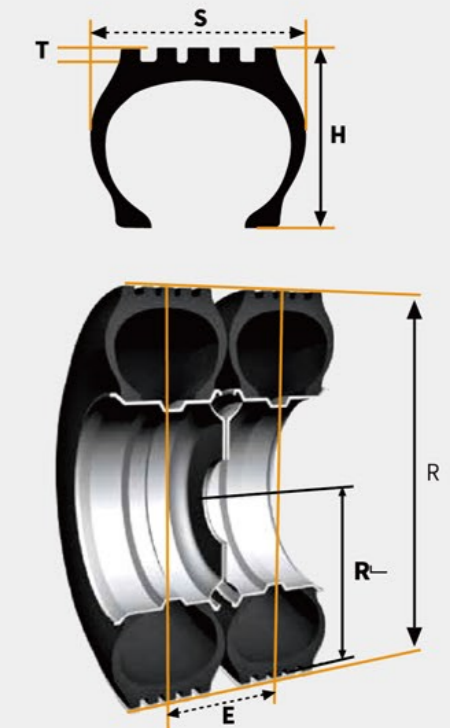
When the coefficients in these tables lead to pressure greater than 10 bars, you must reduce the maximum load capacity to an amount which corresponds to a maximum pressure of 10 bars.

If you wish to use pressure greater than 10 bars, consult us for the tires, check the maximum resistance of rims with your rim manufacturer and comply with regulations in force for fitting and use. The coefficients indicated in this table are taken from the ETRTO.

Urban-bus or City bus(M3 – class I): + 15% of the load indices marked on the tyre, when the average speed does not exceed 40 km/h.

Sub-urban bus or Interurban bus(M3 – class II): + 10% of the load indices marked on the tyre, when the operating speed is restricted to 60 km/h.

-  **S** Tire Section Width
-  **H** Tire Sidewall Height
-  **R** Unloaded Free Diameter
-  **R_s** Static Loaded Radius
-  **D** Rolling Circumference
-  **E** Min. Distance Tire Sidewalls in Twin Fitment
-  **T** Tread Depth

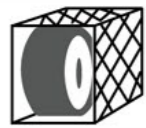


IMPORTANT INSTRUCTIONS FOR SAFE INFLATION

ADVICE BEFORE INFLATION

Weight your vehicle and its load, axle by axle, to determine tire pressure.
Measure the pressure when cold (when the vehicle has been stationary for several hours): pressures must be checked at regular intervals and during each service.
Important safety instruction: pressure increases when the vehicle is in motion, never reduce the pressure of a hot tire.
Pressure gauges: must be accurate, handled with care and calibrated regularly.

INFLATION METHOD



With inflation cage

Place the tire vertically in the inflation cage
Read the cage user manual



Without inflation cage

• Step 1 •



Pre-inflate tire up to 1.5 bars and STOP



Check the tire.
If you have doubts stop and call an expert

• Step 2 •



Inflate up to the appropriate pressure.



During inflation, stand in line with the tire tread minimum three meters away

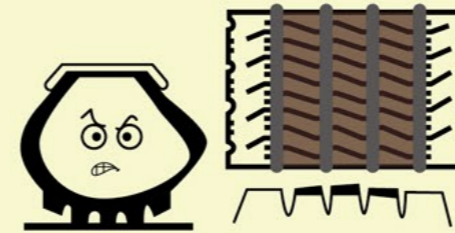
TIRE PRESSURE MANAGEMENT

INFLATION PRESSURE RECOMMENDATION

⚠ SAFETY

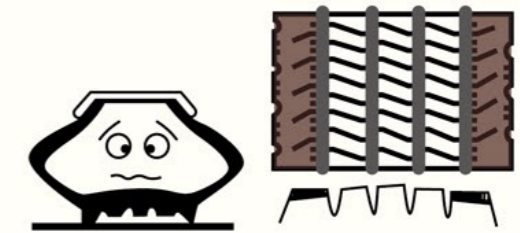
Over-inflation reduces

- Comfort
- Grip
- Safety
- Braking distance
- Tire life span, particularly on drive axle tires



Under-inflation leads to

- Reduced vehicle handling and safety
- A reduction in casing retreadability
- An increase of fuel consumption



Effect of inflation pressure on tire life

